





# AC1350 Wi-Fi Router

Dual Band | MU-MIMO



Archer C59

 867 Mbps 5 GHz +  
450 Mbps 2.4 GHz<sup>†</sup>

 3 Antennas for  
Superior Coverage<sup>†</sup>

 Parental  
Controls

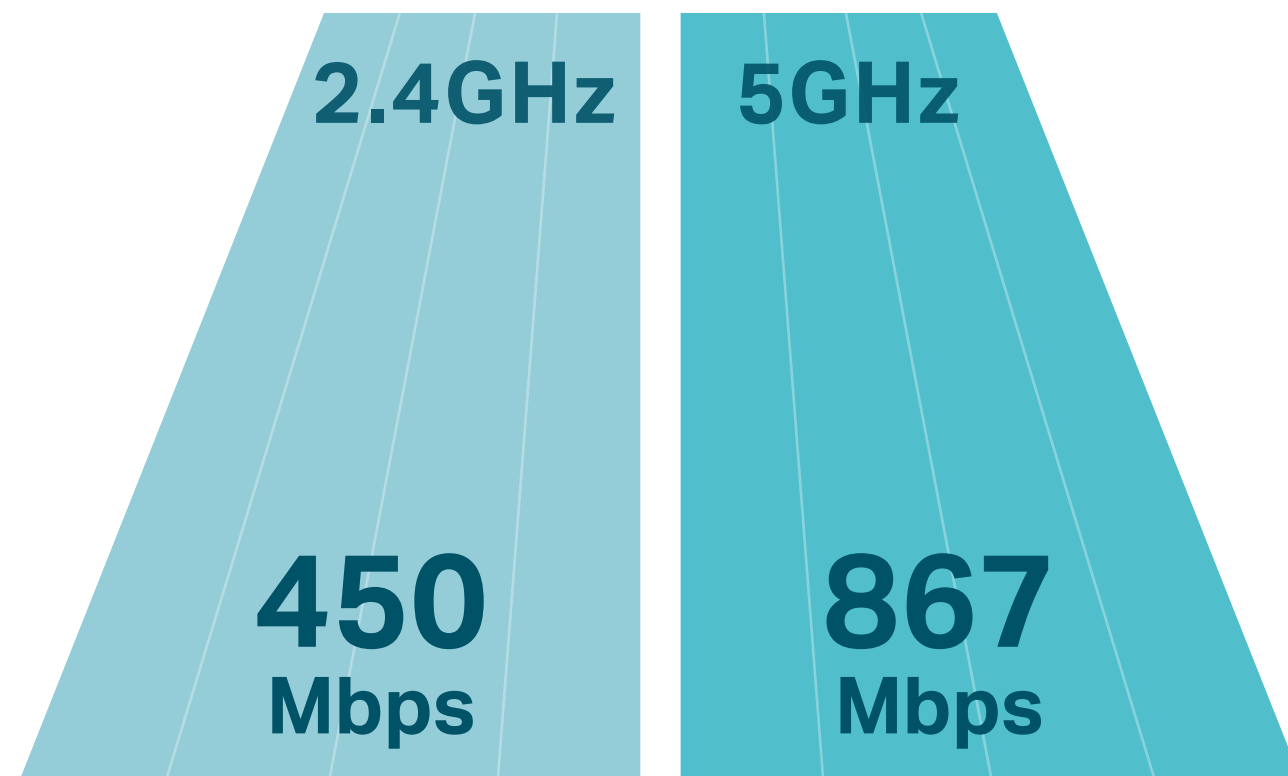
 Easy Setup via  
Tether App

 Full Gigabit  
Ports

# Highlights

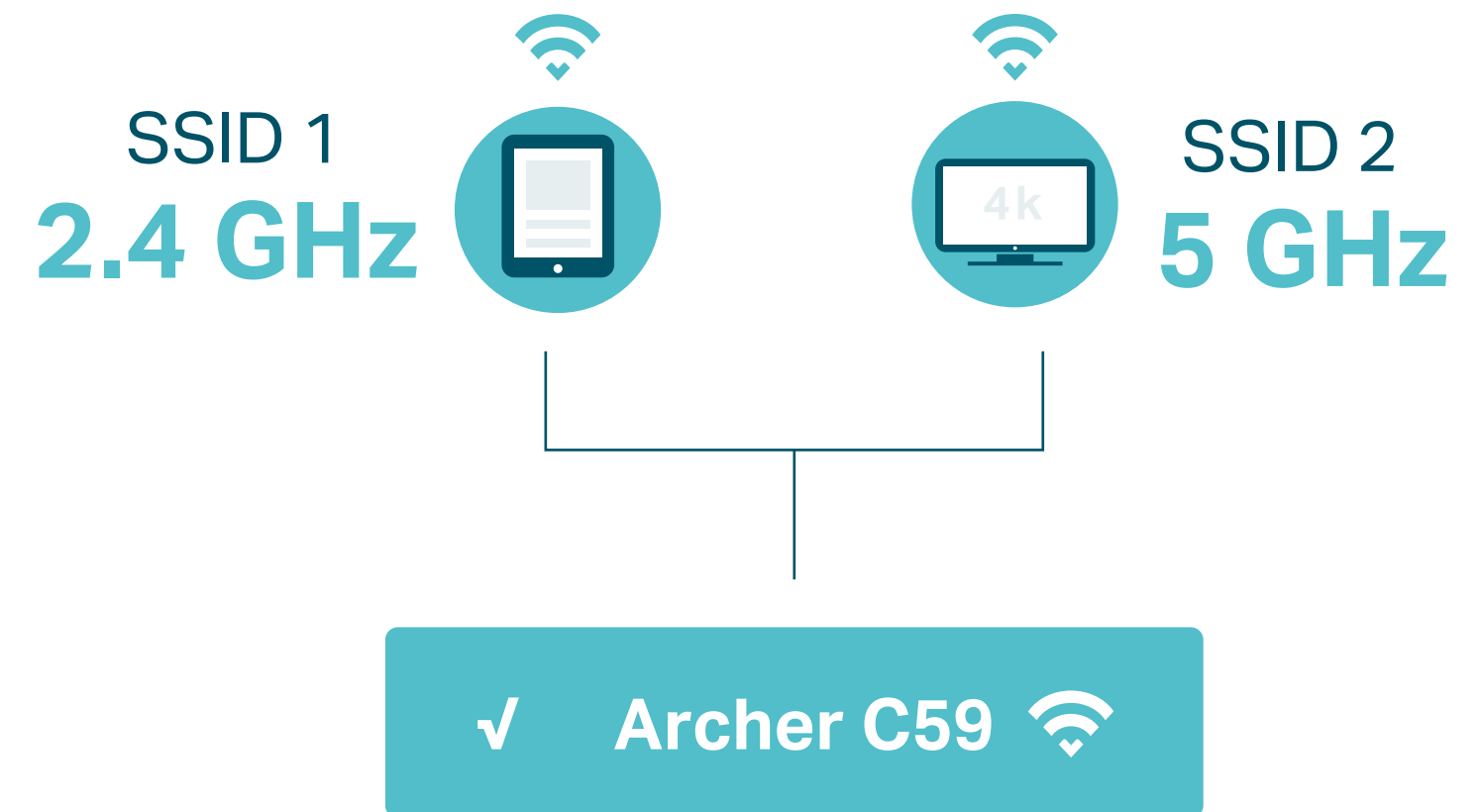
## Speeds up to 1350 Mbps

867 Mbps on the 5 GHz band and 450 Mbps on the 2.4 GHz are ideal for both everyday tasks and lag-free online entertainment. †



## Smart Connect

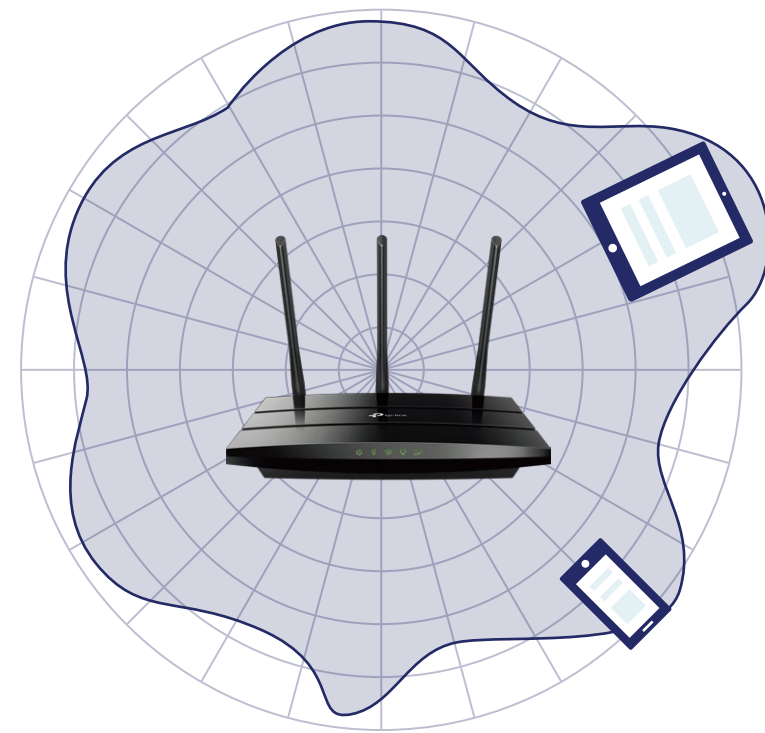
Smart Connect unites 2.4 GHz and 5 GHz band into a single Wi-Fi SSID and helps the router automatically switch each device's connection to the best available Wi-Fi band.



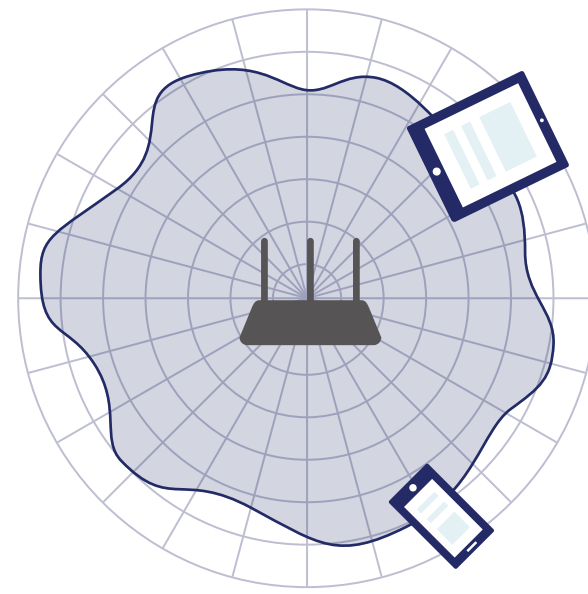
# Highlights

## Vast Wi-Fi Coverage

Three external omni-directional antennas create strong, clear, dependable Wi-Fi throughout your home. Beamforming detects the location of your connected devices and concentrates the Archer C59's signal towards them to optimize wireless connections.†



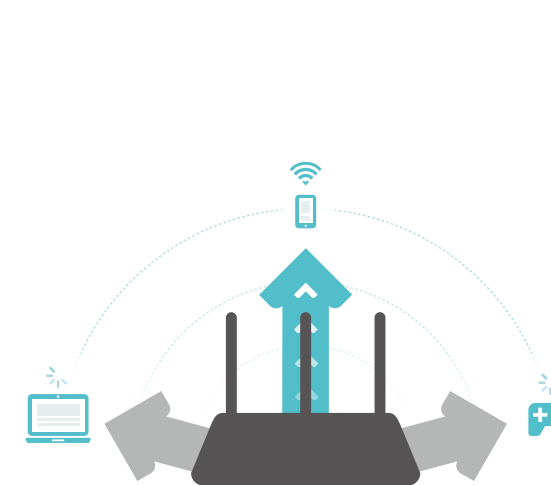
Archer C59



Regular Router

## MU-MIMO

MU-MIMO technology serves multiple devices at once, reducing wait time, increasing Wi-Fi throughput for every device, and making each stream more efficient.‡



Traditional Router

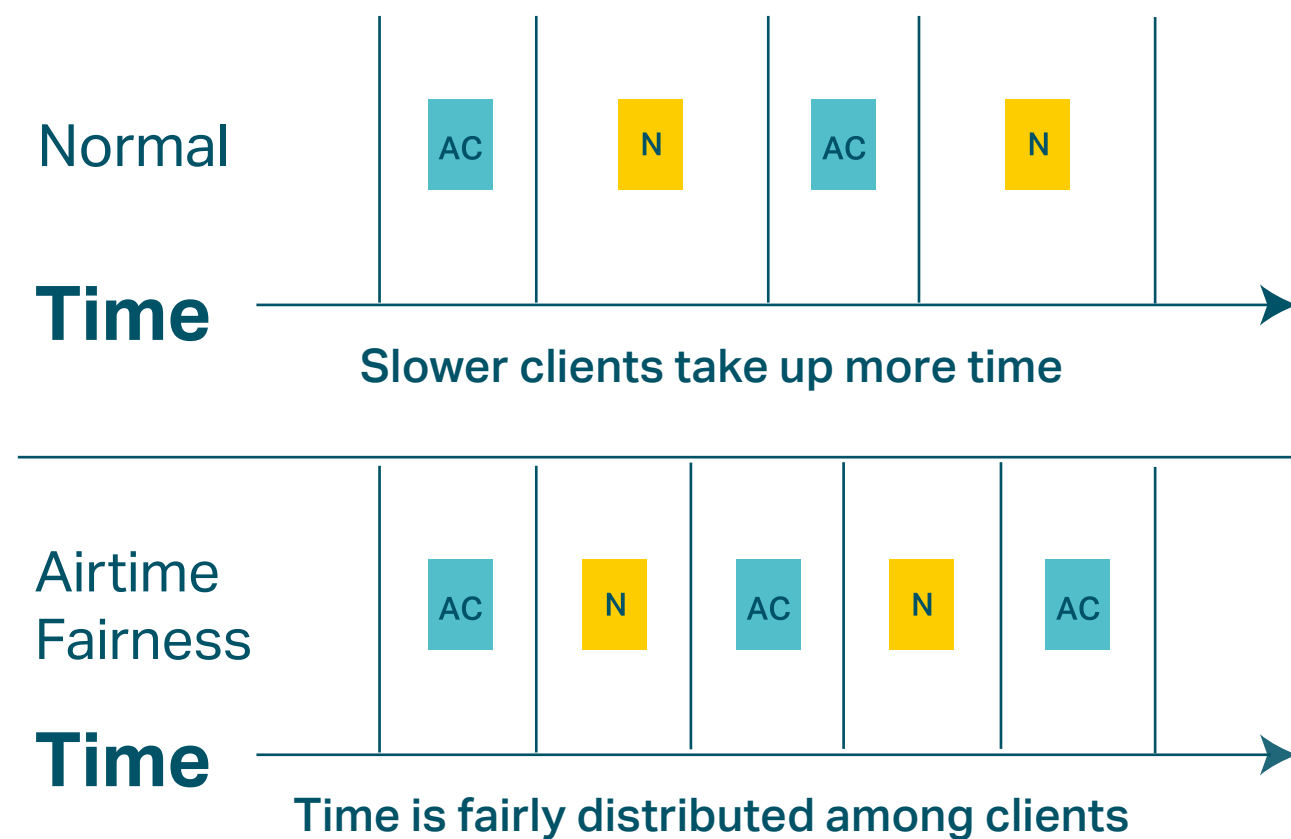


MU-MIMO Router

# Highlights

## Airtime Fairness

Equally divides network time between new devices, such as your gaming rig and older devices to improve your overall Wi-Fi performance and reliability.



## Easy Setup and Use

Installation is simple, thanks to an intuitive web interface and the powerful TP-Link app, Tether. Tether lets you manage your network settings with your smartphone.



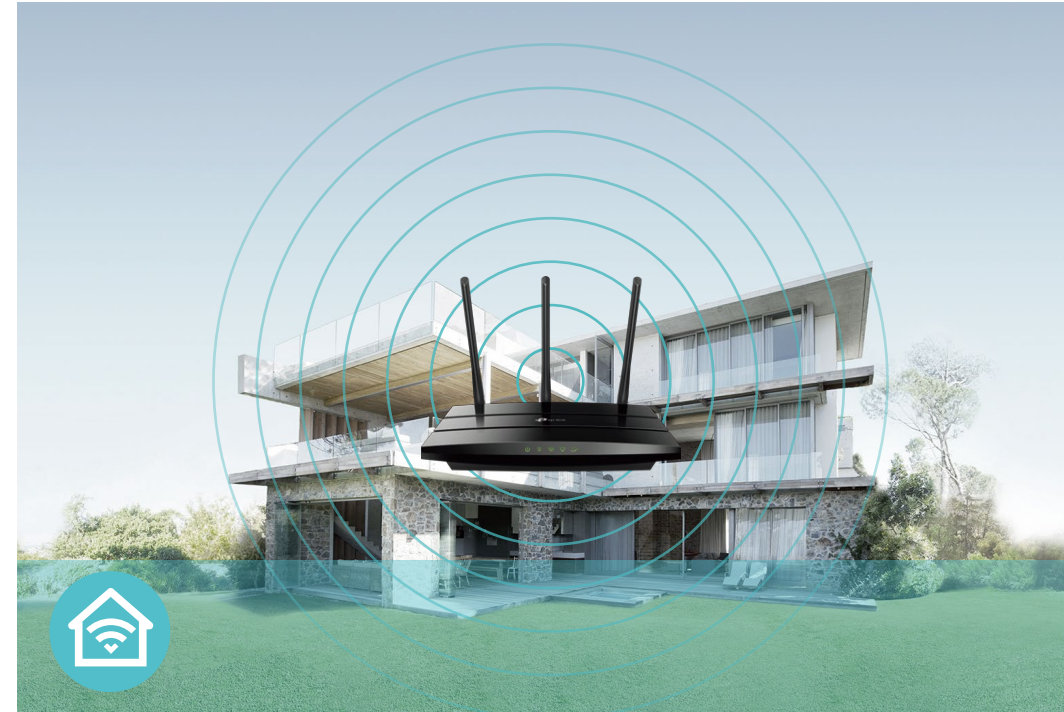
Scan the QR code to download TP-Link Tether.

# Features



## Speed

- **802.11ac Technology** – Powered by 802.11ac Wi-Fi technology, Archer C59 creates a reliable, blazing-fast network.
- **Ultimate Wireless Speed** – 867 Mbps on 5 GHz + 450 Mbps on 2.4 GHz
- **Gigabit Internet Access** – Take full advantages of broadband speeds up to 1 Gbps



## Wi-Fi Range

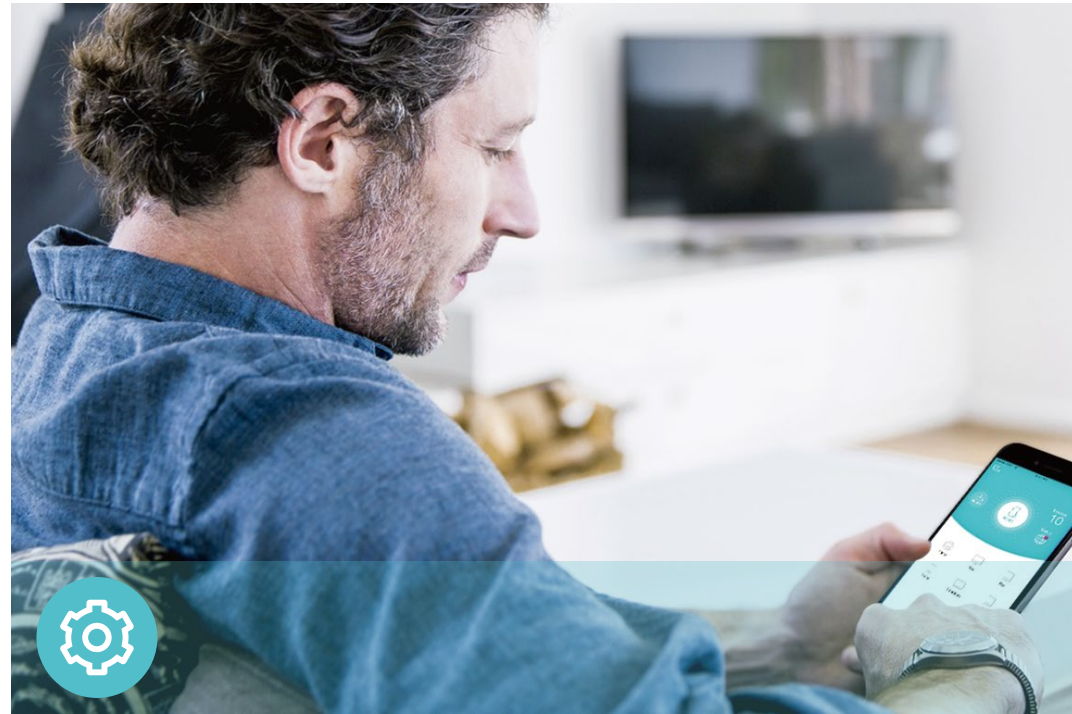
- **Ultimate Range Wi-Fi** – Three external antennas deliver a Wi-Fi signal to every corner of your home, making all of your connections more efficient and stable
- **Beamforming Technology** – Concentrates Wi-Fi signals towards individual devices to ensure stronger connections



## Reliability

- **Airtime Fairness** – Balances airtime usage of connected devices to improve overall throughput and efficiency
- **Smart Connect** – Intelligently assigns each device to the ideal Wi-Fi band

# Features



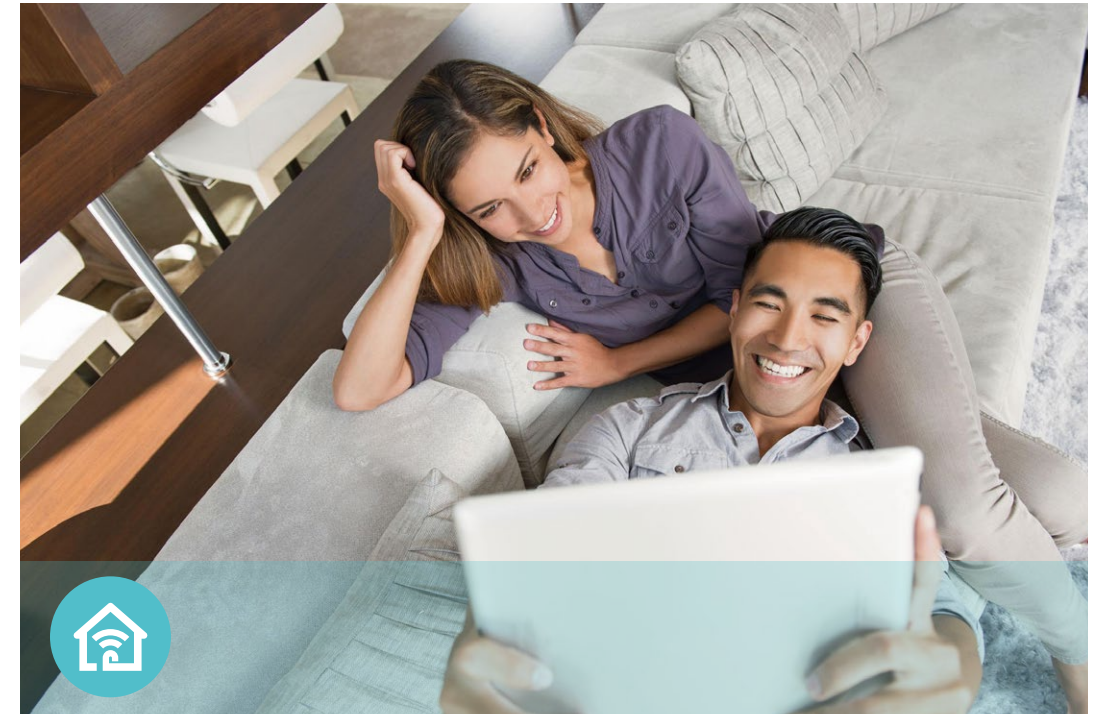
## Easy Management

- Intuitive Web UI – Ensures quick and simple Installation without hassle
- Hassle-free Management with Tether App – Network management is made easy with the TP-Link Tether App, available on any Android and iOS device
- TP-Link ID – Binds the router to your TP-Link ID and other family member's accounts to manage the router



## Security

- Encryptions for Secure Network – WPA-PSK and WPA2-PSK encryptions provide active protection against security threats
- Guest Network – Keeps your main network secure by creating a separate network for friends and visitors
- Parental Controls – Manage when and how connected devices can access the internet



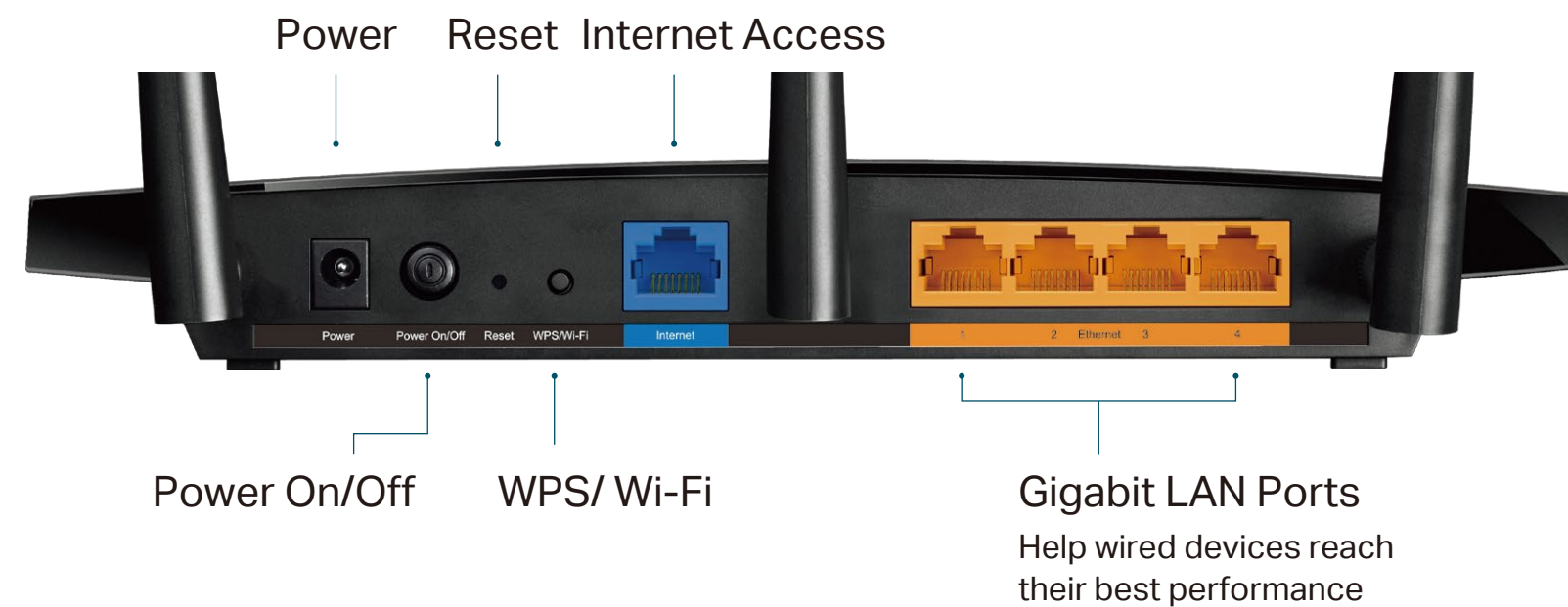
## Ease of Use

- Wi-Fi Sharing – Easily shares your Wi-Fi access with a QR code
- Wi-Fi Schedule – The wireless network can be automatically off within a specified period when you do not need the wireless connection
- LED Control – Automatically turns your router's LEDs off within a specified period

# Specifications

## Hardware

- Ethernet Ports: 1× 10/100/1000 Mbps WAN Port, 4× 10/100/1000 Mbps LAN Ports
- Buttons: WPS/Wi-Fi Button, Power On/Off Button, Reset Button
- Antennas: 3 Fixed Omni Directional Antennas
- External Power Supply: 12V/1.5A
- Dimensions (W x D x H): 9.6 × 6.4 × 1.3 in (243 × 160.6 × 32.5 mm)



## Wireless

- Wireless: 867 Mbps on 5 GHz + 450 Mbps on 2.4 GHz
- Frequency: 2.4 GHz and 5 GHz
- Transmit Power:
  - CE: <20dBm(2.4 GHz), <23dBm(5.15 GHz~5.25 GHz)
  - FCC:<30dBm(2.4 GHz & 5 GHz)
- Reception Sensitivity:
  - 5 GHz:
    - 11a 6Mbps:-98dBm, 11a 54Mbps:-78dBm
    - 11ac VHT20\_MCS0:-98dBm, 11ac VHT20\_MCS8:-72dBm
    - 11ac VHT40\_MCS0:-92dBm, 11ac VHT40\_MCS9:-68dBm
    - 11ac VHT80\_MCS0:-89dBm, 11ac VHT80\_MCS9:-64dBm
  - 2.4 GHz:
    - 11g 6Mbps:-97dBm, 11a 54Mbps:-77dBm
    - 11n VHT20\_MCS0:-97dBm, 11n VHT20\_MCS8:-72dBm
    - 11n VHT40\_MCS0:-92dBm, 11n VHT40\_MCS9:-67dBm
- Wireless Function: Enable/Disable Wireless Radio, WMM
- Wireless Security: 64/128-bit WEP, WPA/WPA2, WPA-PSK/WPA2-PSK encryptions

# Specifications

## Software

- Quality of Service: Device Prioritization
- WAN Type: Dynamic IP/Static IP/PPPoE(Dual Access)/PPTP(Dual Access)/L2TP(Dual Access)
- Management: Access Control, Local Management, Remote Management
- DHCP: Server, DHCP Client List, Address Reservation
- Port Forwarding: Port Forwarding, Port Triggering, UPnP, DMZ
- Dynamic DNS: DynDns, NO-IP, TP-Link
- Access Control: Parental Controls, Local Management Control, White List, Black List
- Firewall Security: SPI Firewall, IP and MAC Address Binding
- Protocols: IPv4, IPv6
- Guest Network: 2.4 GHz Guest Network, 5 GHz Guest Network

## Others

- Certification:  
FCC, RoHS
- System Requirements:  
Microsoft Windows 98SE/NT/2000/XP/Vista™/7/8/8.1/10, MAC OS, NetWare, UNIX or Linux  
Internet Explorer 11, Firefox 12.0, Chrome 20.0, Safari 4.0, or other Java-enabled browser  
Cable or DSL Modem  
Subscription with an internet service provider (for internet access)
- Environment:  
Operating Temperature: 0°C~40°C (32°F ~104°F)  
Storage Temperature: -40°C~70°C (-40°F ~158°F)  
Operating Humidity: 10%~90% non-condensing  
Storage Humidity: 5%~90% non-condensing
- Package Contents  
Wireless Router Archer C59  
Power Adapter  
RJ45 Ethernet Cable  
Quick Installation Guide



For more information, please visit

[https://www.tp-link.com/products/details/?model=Archer+C59\\_V4](https://www.tp-link.com/products/details/?model=Archer+C59_V4)

or scan the QR code left

Attention: This device may only be used indoors in all EU member states and EFTA countries.

Specifications are subject to change without notice. TP-Link is a registered trademark of TP-Link Technologies Co., Ltd. Other brands and product names are trademarks or registered trademarks of their respective holders. Copyright ©2020 TP-Link Technologies Co., Ltd. All rights reserved.

<sup>†</sup>Maximum wireless signal rates are the physical rates derived from IEEE Standard 802.11 specifications. Actual wireless data throughput and wireless coverage are not guaranteed and will vary as a result of network conditions, client limitations, and environmental factors, including building materials, obstacles, volume and density of traffic, and client location.

<sup>‡</sup>Use of MU-MIMO requires clients to also support MU-MIMO.